

RAMI KADI
art

BLOOMING UNIVERSE

MAISON RAMI KADI UNVEILS “BLOOMING UNIVERSE” AT DIANA GHANDOUR STUDIO, IN COLLABORATION WITH BELVEDERE ART SPACE



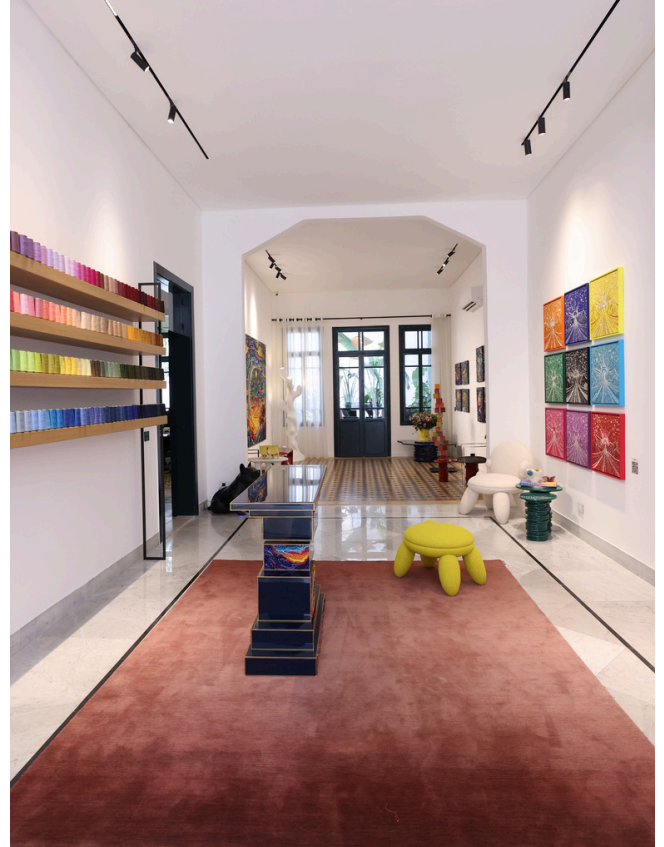
Blooming Universe: Rami Kadi Unveils His Second Art Collection

Beirut, Lebanon — October 2, 2025. Maison Rami Kadi announces the opening of Blooming Universe, the designer's second art collection following his acclaimed debut Highway to Heaven.

Beirut, Lebanon – T: +961 70 992 393 – press@rami-kadi.com

www.rami-kadi.com

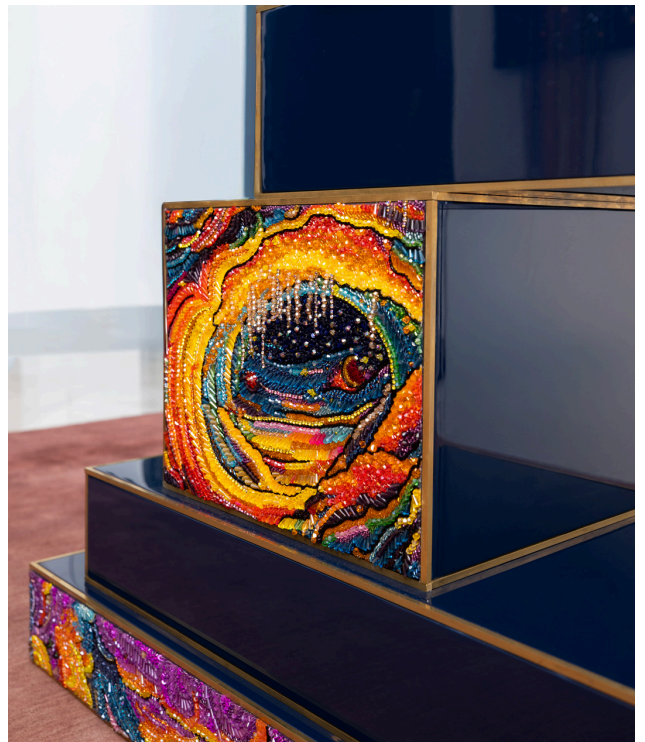
The exhibition is now on view at Diana Ghandour Studio in Gemmayze, Beirut, presented in collaboration with Belvedere Art Space, and will run for one month.



With Blooming Universe, Rami Kadi expands on the cosmic theme first explored in his debut art collection, offering a more direct artistic interpretation of the universe.

“I am endlessly fascinated by this grand design — intricate, delicate, beautiful, and infinite,” says Kadi. “Through fabric and threads, I give form to my admiration for the universe.”

The exhibition showcases 22 works that capture galaxies of color, light, and texture. Each piece is meticulously crafted with techniques drawn from the Maison's Haute Couture, including Swarovski crystals, French knots, raffia threads, and glass beads.



“Each work is the result of relentless effort and refinement. We rework every detail until it feels worthy of the universe’s beauty — our best attempt at capturing its essence,” says Kadi.

A standout piece in the collection is *The Four Seasons of Light*, a four-part installation tracing the cycle of illumination. One frame portrays the vast void, dark yet punctuated with flowers; another captures the emergence of a glowing sphere; while the final two unite as halves of a radiant circle, symbolizing cycles of birth, renewal, and continuity.



Other notable works include *Cosmic Waterfall*, where cascading glass beads flow from the canvas onto the floor, blurring the line between artwork and space, and *Chromium*, a nine-panel constellation of shifting chromatic fields.

At the heart of the exhibition stands its centerpiece, The Cosmic Console - a collaborative creation between Rami Kadi and acclaimed interior designer Diana Ghandour.

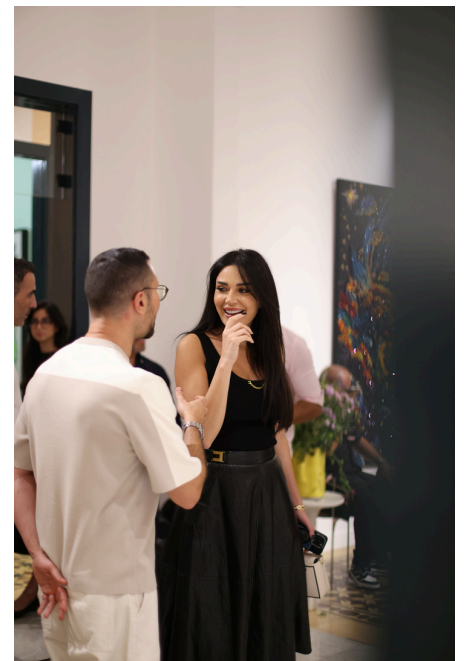
Conceived as both a functional object and an artwork, the console features a glossy lacquer finish and sculptural form that invites imagination. Its surface, capable of changing colors, reinforces its singularity. Balancing practicality with artistry, the console embodies the exhibition's central theme: belonging to the universe while transcending conventional design.



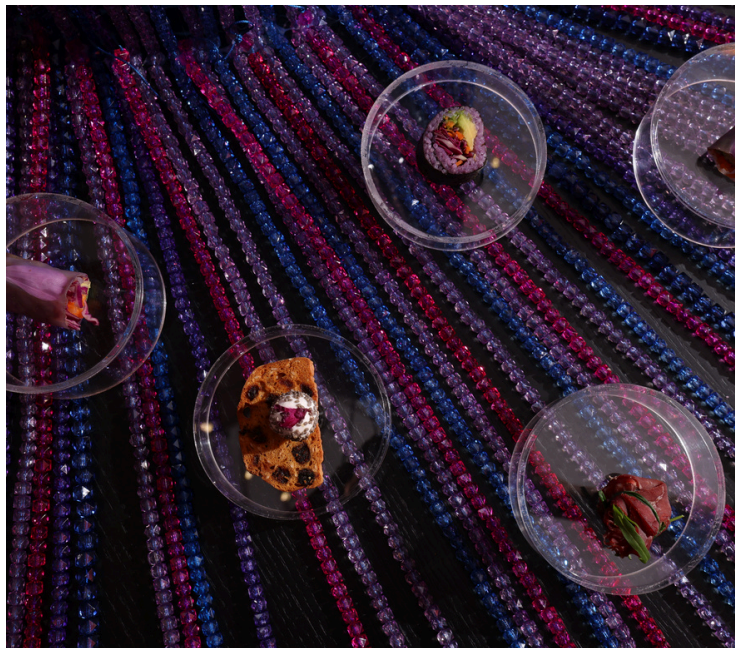
The partnership with Belvedere Art Space builds on the success of their earlier collaboration. Belvedere's role in fostering innovative artistic expression. The exhibition, which attracted collectors, art patrons, and design enthusiasts, underscored and Maison Rami Kadi's drive to blur the boundaries between couture and contemporary art.



The opening night of Blooming Universe brought together celebrities, public figures, and art enthusiasts for a memorable celebration. **Lebanese star Cyrine Abdelnour** was among the distinguished guests, alongside leading names from fashion, media, and culture, whose presence underscored the success of the evening.



The evening's catering was inspired by the beadwork featured in the artworks, with a creative menu curated by **Healthy Mess**. The presentation echoed the collection's intricate details, transforming food into an extension of the exhibition's artistic narrative.



About Rami Kadi

Rami Kadi is the Founder and Creative Director of **Maison Rami Kadi**, celebrated for his innovative approach to couture and meticulous craftsmanship. Known for his love of embroidery and shimmering details, Kadi has captivated an international audience with creations that weave tradition and modernity. With **Blooming Universe**, his second **art collection**, Kadi blends **Haute Couture** techniques like embroidery, crystals, and threads into cosmic landscapes that celebrate imagination, craftsmanship, and beauty.



About Diana Ghandour

Diana Ghandour is a Beirut-based **interior designer** known for her refined approach to spatial design and her ability to blend contemporary aesthetics with functional elegance. Her work often explores the intersection of art, architecture, and furniture, creating **environments and objects** that are both imaginative and practical. Through collaborations with artists and designers, Ghandour continues to push the boundaries of interior design, positioning it as a medium of artistic expression



About Belvedere Art Piece

Belvedere Art Space is a contemporary **gallery in Beirut** dedicated to presenting innovative and forward-thinking works by both **established and emerging artists**. With a curatorial focus that spans fine art, design, and fashion, the gallery fosters cultural exchange and dialogue through multidisciplinary exhibitions. Belvedere champions artists who challenge convention and create works that resonate on local and international levels.





In collaboration with: @belvedereartspace @dianaghandour_studio
Photography: @shotbynourtarabay
Catering: @healthymess.lb